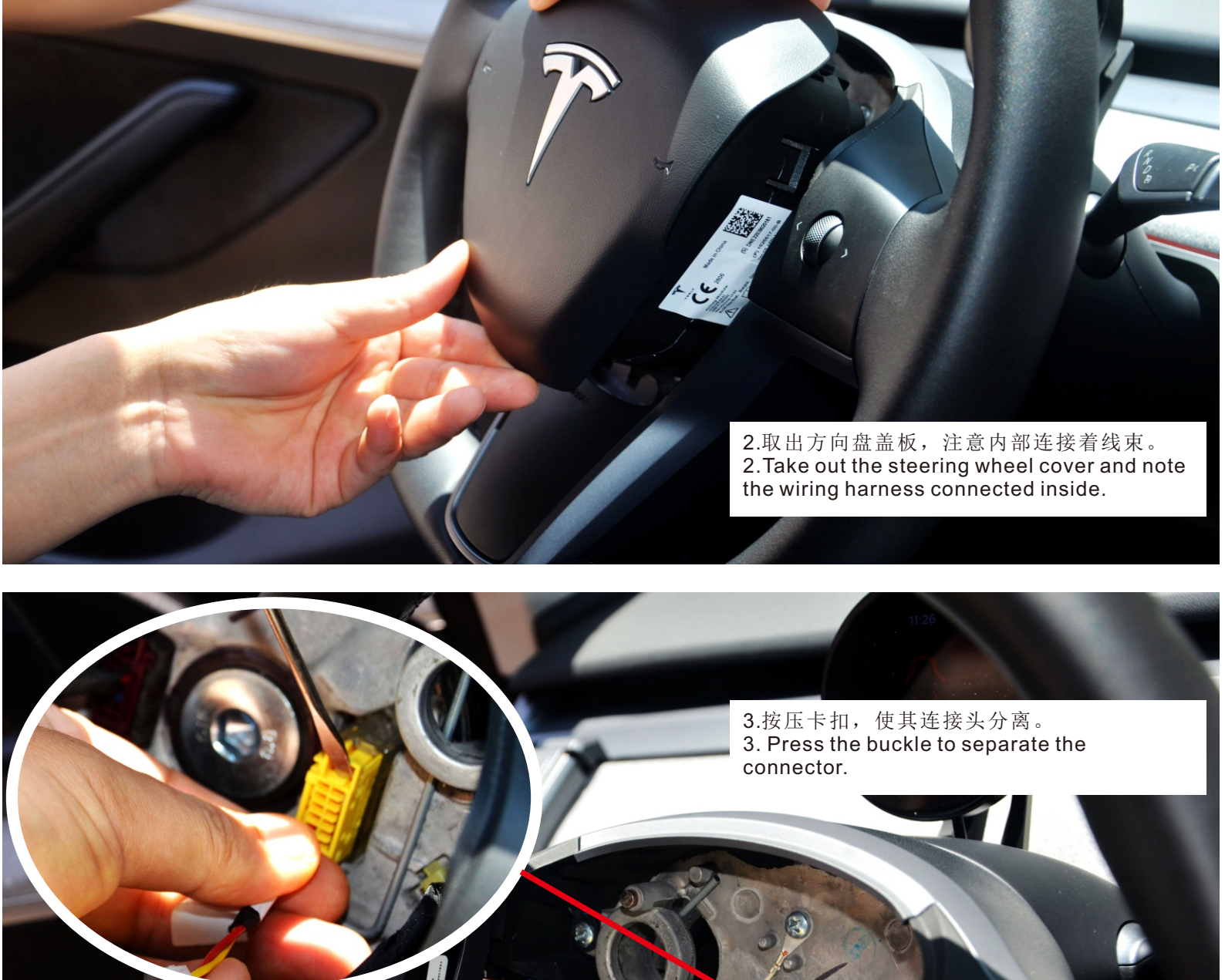




1.从方向盘底部插入两把螺丝刀，向上顶住弹簧钢圈。中心盖板会自动弹出。  
1. Insert two screwdrivers from the bottom of the steering wheel and push up against the spring steel ring. The center cover of the steering wheel will pop out automatically.



2.取出方向盘盖板，注意内部连接着线束。  
2. Take out the steering wheel cover and note the wiring harness connected inside.



3.按压卡扣，使其连接头分离。  
3. Press the buckle to separate the connector.



4.请再次拔出黑色插头，分离后放一旁。  
4. Unplug the black plug again, separate it and set it aside.



5.取出如图标注的4颗螺丝。  
5. Remove the four screws marked in the picture.



6.使用撬棒工具，从缝隙中插入并撬出。  
6. Use a pry bar tool to insert it into the gap and pry it out.



7.只需轻轻拉拔，请勿用力过多。  
7. Just pull gently, do not use too much force.



8.再次轻轻用力，使其完全分离开。  
8. Apply gentle force again to separate them completely.



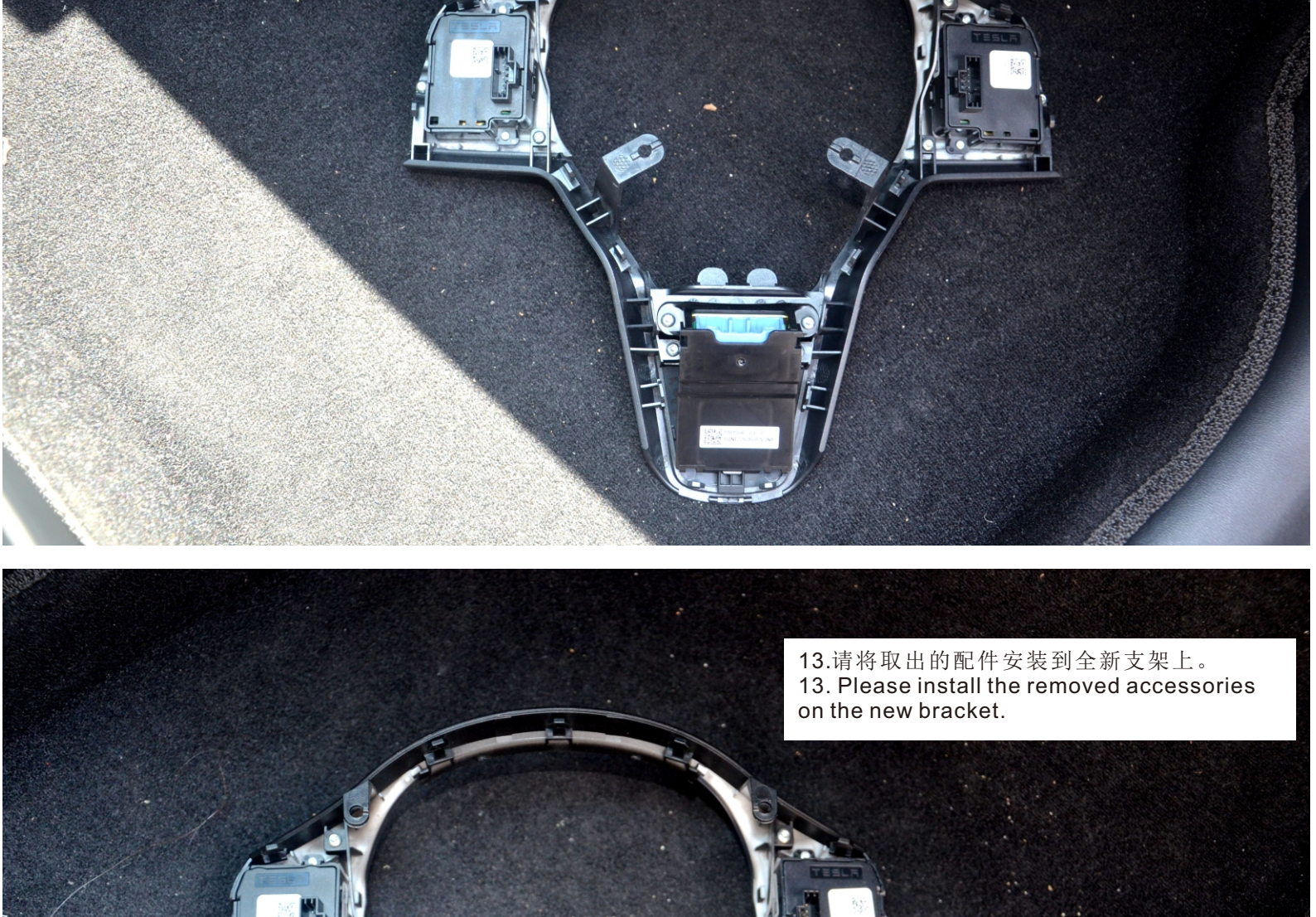
9.注意内部有线束接头。  
9. Note that there is a wiring harness connector inside.



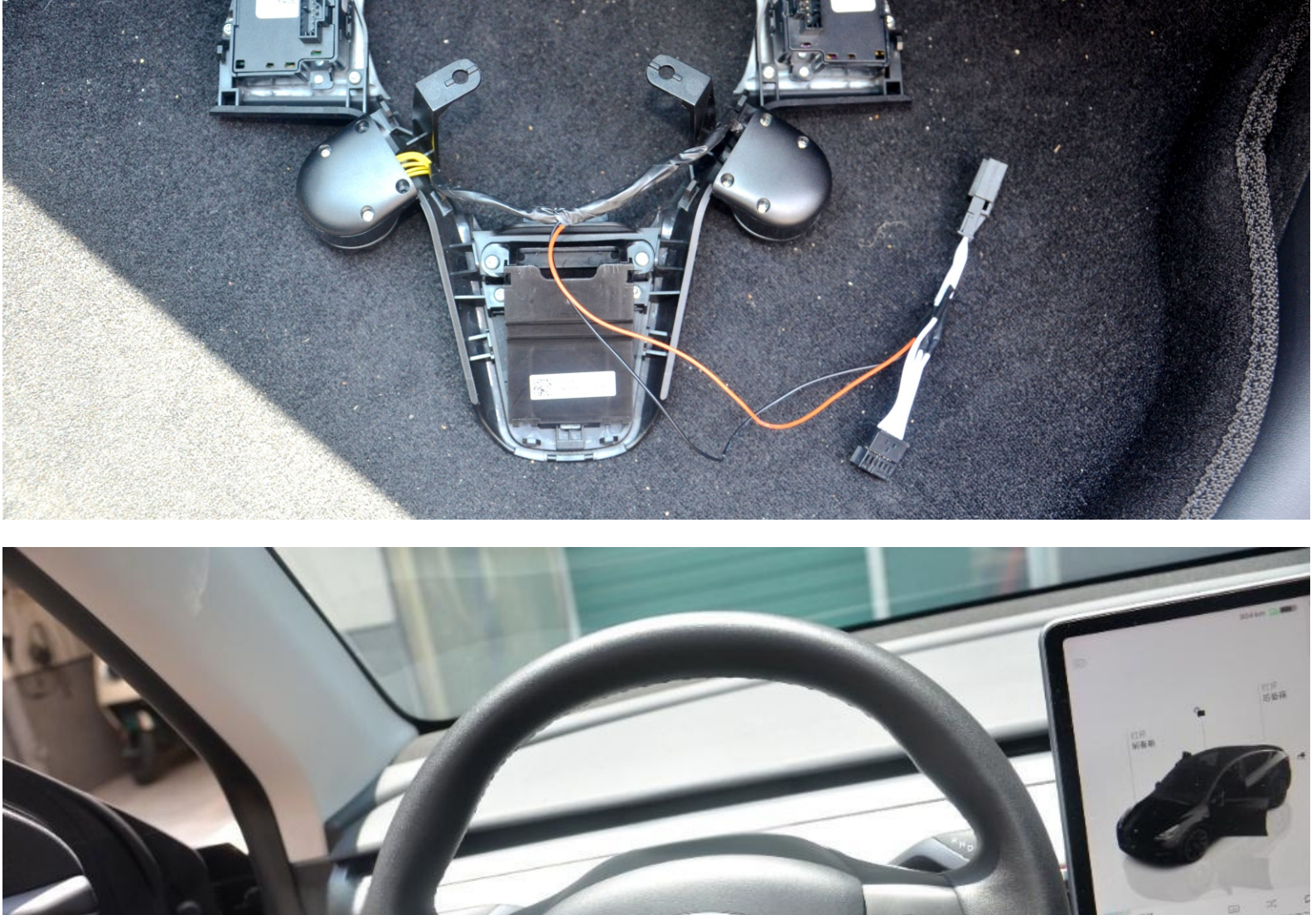
10.将黑色的插头分离。  
10. Detach the black plug.



11.将蓝色的插头分离。  
11. Unplug the blue plug.



12.请拆开如图所示的3个配件。  
12. Please disassemble the three accessories as shown in the picture.



13.请将取出的配件安装到全新支架上。  
13. Please install the removed accessories on the new bracket.



14.最后按照相反的顺序安装好所有配件。  
14. Finally, install all accessories in reverse order.